

Endoscopy Equipment

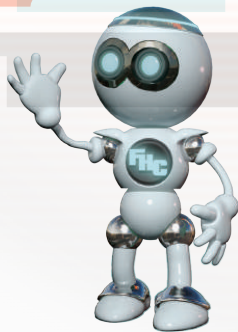
FHC Carrys a Full Line of state-of-the-art FSN Endoscopy Display Monitors.

At Future Health Concepts, we offer quality new endoscopy monitors and light sources to ensure clear, crisp viewing with state-of-the-art FSN display monitors. We also offer a variety of exceptional refurbished endoscopy systems that are fully prepared from our facility and have all the necessary parts & accessories to be used without assembly. Each of our refurbished Endoscopy Systems come with a one year parts & labor warranty to ensure worry-free purchasing. If you're interested in purchasing a refurbished system, call one of our sales team members at 888-282-8644 and find out if we have the right system for you!



FHC-STRYKER1188

**COMPLETE SYSTEM
READY TO SHIP!**



FS-L2701DT

FHC carries a full line of FSN medical-grade display monitors, ranging in size from 19" to 55". Each display comes with an extensive list of input and output connections and touchscreen option. FSN's highly integrated design approach takes into consideration the multitude of video formats that are in use today. FSN's medical video solutions are engineered for compatibility with other highly specialized surgical and diagnostic equipment used in surgical suites, operating rooms, emergency rooms, and procedural facilities.

Endoscopy Equipment

We also offer choice refurbished Endoscopy Systems set-up & ready to ship!

50-Watt LED Light Source:

- 50-watt LED light source
- More than 50,000 hours LED array life
- 6500°K color temperature
- Turret ports (Storz, ACMI, Olympus, Wolf)
- Manual variable light intensity control
- Dimensions: 7.6" x 5" x 7.75"

Also available: BR900-2460 - 100-Watt LED Light Source



BR900-2453

180-Watt Xenon Light Source:

- 180-watt Xenon arc
- Average of 650 hours prorated lamp life
- 5600°K color temperature
- Turret ports (Storz, ACMI, Olympus, Wolf)
- Manual variable light intensity control
- Dimensions: 14" x 4.75" x 13.4"

Also available: BR900-2301 - 300-watt LED Light Source



BR900-2181

150-Watt Halogen Light Source:

- 150-watt Halogen
- 3600°K color temperature
- Single ports (Storz), other adapters available
- Manual variable light intensity control
- Dimensions: 7" x 3.25" x 8"

Also available: BR900-2252HLS - 250-watt Dual Lamp Halogen Light Source



BR900-2150HLS

Xenon, LED/Halogen, and Wireless LED Headlamps Also Available!

Endoscopy Equipment

Control OR Video Integration System:

- Simultaneous distribution of signal sources to one or more displays
- Input/output connections using analog, digital, and fiber standards
- Picture-in-picture, picture-by-picture, and picture-on-picture capabilities
- Configure video distribution via touch screen tablet interface
- Upgrades and maintains signal integrity
- Small footprint - resides on cart or boom shelf, next to video sources



FS-IPS1000A

Wireless Transmitter & Receiver:

- Wireless HD video without compression
- Signal is encrypted and bonds 1-to-1
- Range is designed to stay within one room
- FDA 510k clearance
- Near zero latency
- 60 Ghz reliability
- Mounts easily to a variety of surfaces
- Transmitter and receiver automatically synchronize
- Supports high quality 1080p video
- Multiple transmitter and receivers can be configured to form a network



FS-WIS1000

Signal Conditioner:

- Scales a video signal, up or down, for optimum wireless transmission
- Mounts as a base to FS-WIS1000 wireless transceivers
- Supports high quality 1080p video
- Optional VESA mount bracket

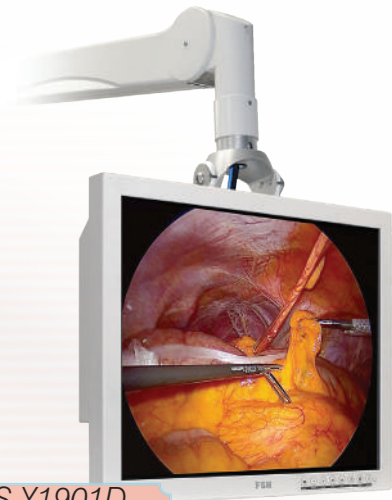


FS-WIS1001

Endoscopy Equipment

19" FSN Medical LCD Display Monitor:

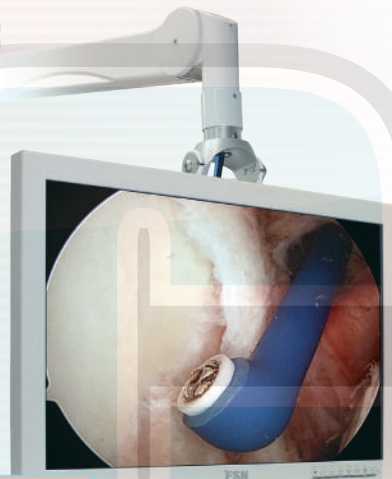
- Rapid signal detection, robust mode tables
- High-bright LED backlight
- Fanless - sterile field compatible
- Built to last, rugged aluminum housing
- Calibrated to clinical color
- DVI & SDI connections
- Image pan, zoom, freeze, picture-in-picture



FS-Y1901D

24" FSN Medical LCD Display Monitor:

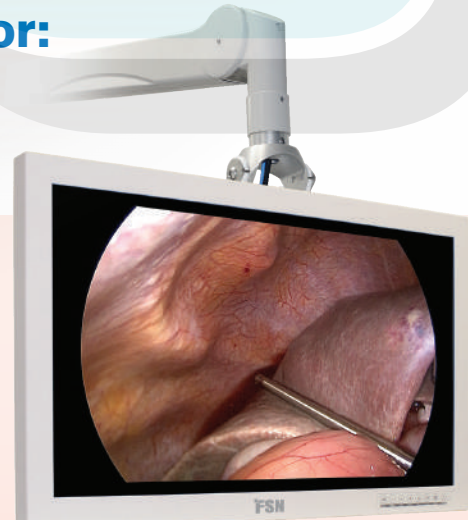
- Rapid signal detection, robust mode tables
- High-bright LED backlight
- 2 DVI in/out
- 5v DC power output
- Fanless - sterile field compatible
- Built to last, rugged aluminum housing
- Optical enhancement
- Calibrated to clinical color
- Image pan, zoom, freeze, picture-in-picture



FS-L2402D

26" FSN Medical LCD Display Monitor:

- Rapid signal detection, robust mode tables
- High-bright LED backlight
- Touch option
- Artifact-free HD images
- Enhancement option
- Fanless - sterile field compatible
- Built to last, rugged aluminum housing
- Calibrated to clinical color
- Image pan, zoom, freeze, picture-in-picture

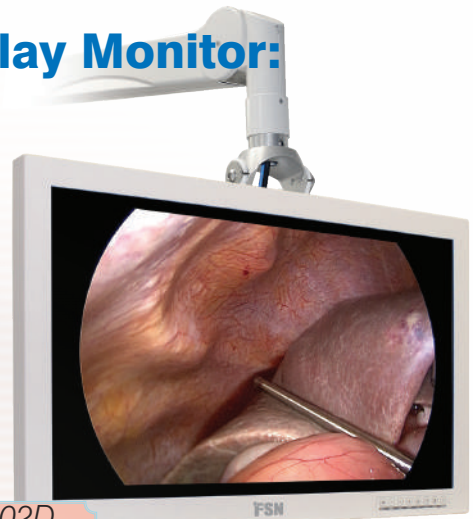


FS-P2601D

Endoscopy Equipment

26" FSN Medical Enhanced LCD Display Monitor:

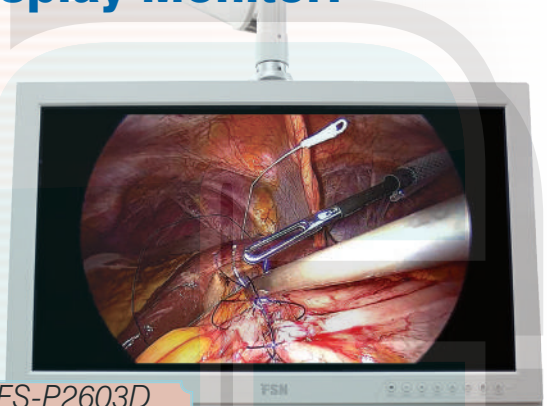
- Improved contrast ratio and brightness
- Humidity and breakage resistant
- Rapid signal detection, robust mode tables
- Artifact-free HD images
- High-bright LED backlight
- Fanless - sterile field compatible
- Built to last, rugged aluminum housing
- Calibrated to clinical color
- Image pan, zoom, freeze, picture-in-picture



FS-P2602D

26" FSN Medical Expanded LCD Display Monitor:

- Rapid signal detection, robust mode tables
- High-bright LED backlight
- Expanded input/output options
- Artifact-free HD images
- 2 DVI in/out, 2 3G-SDI in/out
- Fanless - sterile field compatible
- Calibrated to clinical color
- Polymer housing
- Image pan, zoom, freeze, picture-in-picture



FS-P2603D

27" FSN Medical LCD Touch LCD Display Monitor:

- Touch-screen display
- Rapid signal detection, robust mode tables
- High-bright LED backlight
- Artifact-free HD images
- Fanless - sterile field compatible
- Built to last, rugged aluminum housing
- Flush surface
- Lightweight of only 18 lbs.
- 1 SD/HD/3G-SDI in/out
- 2 DVI in, 1 DVI out
- Image pan, zoom, freeze, picture-in-picture

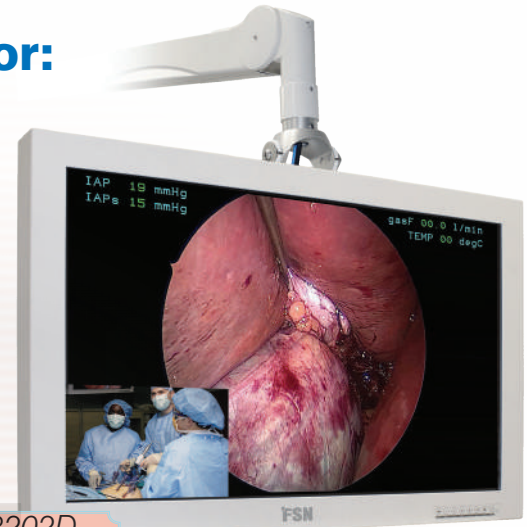


FS-L2701DT

Endoscopy Equipment

32" FSN Medical LCD Display Monitor:

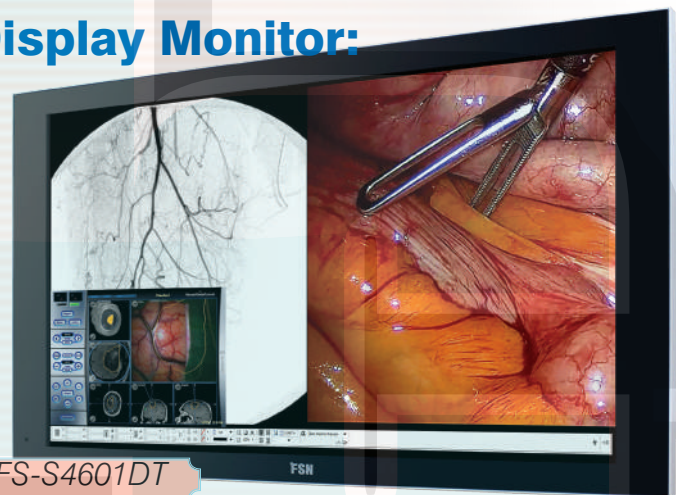
- Rapid signal detection, robust mode tables
- High-bright LED backlight
- Artifact-free HD images
- Fanless - sterile field compatible
- Built to last, rugged aluminum housing
- Calibrated to clinical color
- 2 DVI in/out
- 5v DC power output
- 2 3G-SDI in/out
- Image pan, zoom, freeze, picture-in-picture



FS-L3202D

46" FSN Medical LCD Touch Display Monitor:

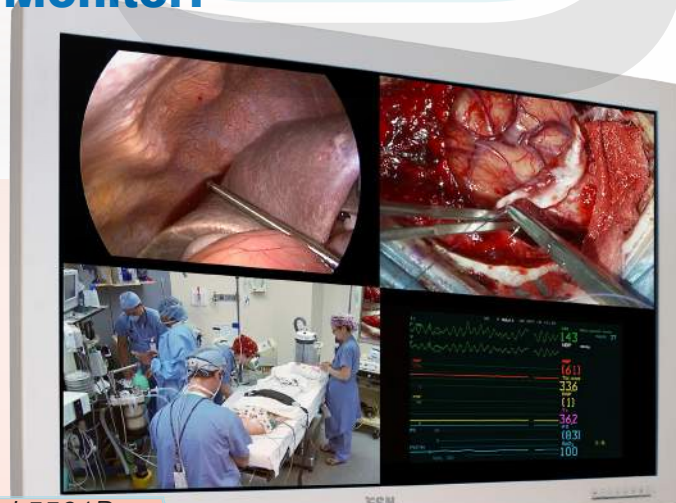
- Large touch-screen display
- Rapid signal detection, robust mode tables
- High-bright LED backlight
- Artifact-free HD images
- Fanless - sterile field compatible
- Built to last, rugged aluminum housing
- Flush surface
- 1 DVI-D and 1 SD/HD/3G-SDI in/out
- image pan, zoom, freeze, picture-in-picture



FS-S4601DT

55" FSN Medical LCD Display Monitor:

- Rapid signal detection, robust mode tables
- High-bright LED backlight
- Fanless - sterile field compatible
- Ultimate large-screen display
- Built to last, rugged aluminum housing
- Calibrated to clinical color
- DVI & SDI connections
- Internal power supply
- Image pan, zoom, freeze, picture-in-picture



FS-L5501D