

Medical Seating

993 Exam Stool: 360° Hand Ring Adjustment

Standard Features:

- Polished aluminum base
- Standard height adjustment: 17" – 22"
- Seat diameter: 16"
- Base diameter: 24"
- California 117 fire resistant foam
- 3/4" thick composite substrate with steel reinforcement plate
- Weight capacity: 300 lbs.
- COM requirement 1 yd

Options:

- Back rest (Order Ex. IN993-B)
- 18" polished chrome foot rest (Order ex. IN993-F)
- 7" stroke cylinder: 19" - 26" (Order ex. IN993-7)
- 10" stroke cylinder: 23" - 33" (Order ex. IN993-10)
- Soft wheel casters or glides (Please specify)



983 Exam Stool: 360° Foot Ring Adjustment

Standard Features:

- Polished aluminum base
- Standard height adjustment: 19" to 24"
- Seat diameter: 16"
- Base diameter: 24"
- Overall height with backrest: 33" to 38"
- Pneumatic height adjustment
- COM requirement 1 yd
- Weight capacity: 300 lbs.

Options:

- Back rest (Order ex. IN983-B)
- 7" stroke cylinder: 19" - 26" (Order ex. IN983-7)
- 10" stroke cylinder: 23" - 33" (Order ex. IN983-10)
- Soft wheel casters or glides (Please specify)



Medical Seating

973 Exam Stool: D-Handle Release

Standard Features:

- Polished aluminum base
- Standard height adjustment: 17" – 22"
- Seat diameter: 16"
- Base diameter 24"
- California 117 fire resistant foam
- 3/4" thick composite substrate with steel reinforcement plate
- Weight capacity: 300 lbs.
- COM requirement 1 yd

Options:

- Back rest (Order ex. IN973-B)
- 18" polished chrome foot rest (Order ex. IN973-F)
- 7" stroke cylinder: 19" - 26" (Order ex. IN973-7)
- 10" stroke cylinder: 23" - 33" (Order ex. 973-10)
- Procedure arm (Order ex. 973-PA)
- Soft wheel casters or glides (Please specify)



IN973

963 Exam Stool: Single Lever Release

Standard Features:

- Standard height adjustment: 17" to 22"
- Seat diameter: 16"
- Base diameter: 24"
- California 117 fire resistant foam
- 3/4" thick composite substrate with steel reinforcement plate
- Weight capacity: 300 lbs.
- COM requirements 1 yd

Options:

- Back rest (Order ex. IN963-B)
- 18" Polished chrome foot rest (Order ex. IN963-F)
- 7" Stroke cylinder: 19" - 26" (Order ex. IN963-7)
- 10" Stroke cylinder: 23" - 33" (Order ex. IN963-10)
- Procedure arm (Order ex. IN963-PA)
- Soft wheel casters or glides (Please specify)



IN963

Medical Seating

933 Exam Stool: Manual Spin-Lift

Standard Features:

- Polished aluminum base
- Standard height adjustment: 19" to 24"
- Seat diameter: 16"
- Base diameter: 24"
- California 117 fire resistant foam
- 3/4" thick composite substrate with steel reinforcement plate
- Weight capacity: 300 lbs
- COM requirements 1 yd

Options:

- Back rest (Order ex. IN933-B)
- 18" polished chrome foot rest (Order ex. IN933-F)
- Soft wheel casters or glides (Please specify)



IN933

925 Exam Stool: Bariatric Fixed Height

Standard Features:

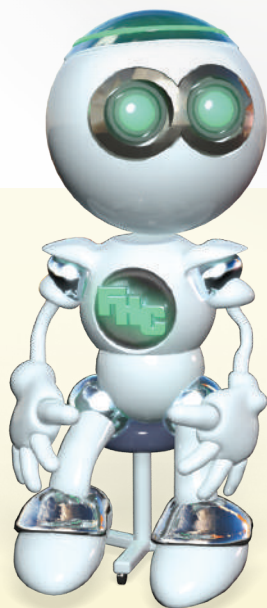
- Fixed seat height: 19"
- Seat diameter: 16"
- Base diameter: 26"
- Weight capacity: 600 lbs
- COM requirement 1 yd

Options:

- 21" height (IN926)
- Soft wheel casters or glides (Please specify)



IN925



AI3

Medical Seating

873 Lab Stool: D-Handle

Standard Features:

- Polished aluminum base
- Seat height adjustment: 23" to 33"
- Seat diameter: 15 3/4"
- Base diameter: 24"
- California 117 fire resistant
- 3/4" thick composite substrate with steel reinforcement plate
- Adjustable seat back
- Seat back dimensions: 15 3/4" x 9 1/2"
- 18" diameter foot rest
- Standard with casters
- Weight capacity: 300 lbs.
- COM requirement 1 yd

Options:

- 7" stroke cylinder 19" - 26" (Order ex. IN873-7)
- Soft wheel casters or glides (Please specify)



IN873

863 Lab Stool: Single Lever Hand Release

Standard Features:

- Polished aluminum base
- Standard height adjustment: 19" to 24"
- Seat diameter: 16"
- Base diameter: 24"
- Overall height with backrest: 33" to 38"
- Pneumatic height adjustment
- COM requirement 1 yd

Options:

- Back rest (Order ex. IN983-B)
- 7" stroke cylinder: 19" - 26" (Order ex. IN983-7)
- 10" stroke cylinder: 23" - 33" (Order ex. IN983-10)
- Soft wheel casters or glides (Please specify)



IN863

Medical Seating

833 Ergonomic Lab Chair: Seat & Back Tilt

Standard Features:

- Polished aluminum base
- Standard height: 23" to 33"
- Base diameter: 24"
- Seat dimension: 20"W x 18"D
- Overall height with backrest: 38" to 48"
- Foot ring diameter: 20"
- Back dimension: 18"W x 16"H
- Adjustable back rest height only
- Pneumatic height adjustment
- Weight capacity: 300 lbs.
- COM requirements 1 yd

Options:

- 7" stroke cylinder: 20" - 27" (Order ex. IN833-7)
- T arms (Order ex. IN833-T)
- Soft wheel casters or glides (Please specify)



813 Ergonomic Lab Chair: Adjustable Back

Standard Features:

- Polished aluminum base
- Standard height: 23" to 33"
- Base diameter: 24"
- Seat dimension: 20"W x 18"D
- Overall height with backrest: 38" to 48"
- Foot ring diameter: 20"
- Back dimension: 16"W x 16"H
- Lateral back rest adjustment
- Pneumatic height adjustment
- Weight capacity: 300 lbs.
- COM requirements 1 yd

Options:

- 7" stroke cylinder: 20" - 27" (Order ex. IN813-7)
- T arms (Order ex. IN813-T)
- Soft wheel casters or glides (Please specify)



Medical Seating

748 Surgical Stool: Hydraulic w/ Silver Column

Standard Features:

- Brushed aluminum base
- Standard height: 19.5" to 26.5"
- Base diameter: 24"
- Seat diameter: 16"
- Overall height with backrest: 35.5" to 42.5"
- 1/2" chrome plated steel foot control
- Hydraulic height adjustment
- Rotation lock
- COM requirements 1 yd
- Weight capacity: 300 lbs.

Options:

- Back rest (Order ex. 748-B)
- Crescent back (Order ex. 748-CB)
- Soft wheel casters or glides (Please specify)



744 Surgical Stool: Hydraulic w/ Black Column

Standard Features:

- Black aluminum base
- Standard height: 19.5" to 26.5"
- Base diameter: 24"
- Seat diameter: 16"
- Overall height with backrest: 35.5" to 42.5"
- 1/2" chrome plated steel foot control
- Hydraulic height adjustment
- Rotation lock
- COM requirements 1 yd
- Weight capacity: 300 lbs.

Options:

- Back rest (Order ex. IN744-B)
- Crescent back (Order ex. IN748-CB)
- Soft wheel casters or glides (Please specify)



Medical Seating

610 Phlebotomy Chair: Upholstered

Standard Features:

- Seat height: 22"
- Seat dimension: 18.5"W x 18.5"D
- Back dimension: 19.5"W x 17"H
- Overall height: 37.5"
- Overall width: 28.5"
- Armrest adjustment height: 27" - 36"
- Overall depth: 29"
- Weight capacity: 1200 lbs.
- COM requirements 2yd

Also Available:

Bariatric Phlebotomy Chair (Order Ex. IN620)

- Seat dimensions: 24.5"W x 18.5"D
- Back dimensions: 25.5"W x 17"H
- Overall height: 37.5"
- Overall width: 34"
- Weight capacity: 1200 lbs
- COM requirements 2.5 yd



605 Phlebotomy Chair: Right Hand Arm Rest

Standard Features:

- Seat height: 22"
- Seat dimension: 18"W x 18"D
- Back dimension: 18"W x 12.5"H
- Armrest height: 27"
- Overall height: 31.5"
- Overall width: 23"
- Overall depth: 28"
- COM requirements 1.5 yd
- Weight capacity: 300 lbs.



Medical Seating

240 Patient Chairs: Wall Savers

Standard Features:

- 14 gauge tubular steel
- Seat height: 18"
- Overall height: 32"
- Overall width: 24"
- Seat dimension: 20.5"W x 19.5" D
- Back dimension: 21"W x 15"H
- Arm height: 26"
- Wall saver leg design
- Black powder coated frame
- COM requirements 2 yds
- Weight capacity 1200 lbs.

Also Available:

- Wall saver without arms (Order ex. IN242)
- Bariatric wall saver w/ arms (Order ex. IN241)
- Bariatric wall saver without arms (Order ex. IN240)



200 Patient Chairs: Stacking Wall Savers

Standard Features:

- 14 gauge black powder coated tubular steel
- Seat height: 18"
- Overall height: 32"
- Overall width: 24"
- Seat dimension: 18"W x 18" D
- Back dimension: 18"W x 12.5"H
- Arm height: 26"
- Stackable design
- COM requirements 2 yds
- Weight capacity: 250 lbs.

Also Available:

- Stacking wall saver with straight arms (Order ex. IN201)
- Stacking wall saver without arms (Order ex. IN200)

