

# Patient Monitors

FHC offers a full line of vital sign & anesthesia monitoring.



LAF3-86-390-0910-97

## Star 60 Color Patient Monitor:

- 10.4" High resolution backlit LED display
- 6-channel Multi-parameter monitor
- Standard parameters: ECG, respiration, dual temperature, NiBP, SpO2 (Nellcor), IBP
- Upgradable to (internal/external), Microstream EtCO2 (with IPI™)
- ST segment analysis && Arrhythmia detection
- Advanced alarm management system including Satseconds™
- WiFi connectivity with Central Nursing Station (Optional)

## Star 90 Color Patient Monitor:

- 10 channel sleek, slim monitor
- 15" high resolution (touch) color backlit LED display
- Modular form with inbuilt rack
- Basic configuration: ECG, SpO2, NiBP, dual temperature, dual IBP, respiration
- OxyCRG & Drug dose calculation
- Multiple screen formats w/ auto-format screen
- Adult, pediatric and neonatal applications
- 240 hours of graphical & tabular trends
- External modules and host of pluggable device connectivity
- 2 hours of battery backup
- 24 hrs waveform storage and download
- Specialty module options: NiCCO, EtCO2 (with IPI™)
- WiFi ready
- Wireless connectivity to CNS Skyline 55 & Skyview mini
- Eco-friendly data manager
- Advanced alarm management system



LAF3-99-390-0136-37

# Patient Monitors

## AGM 55 Module:

- Anesthesia gas monitoring module
- Compatible with Star 90 and Star 55 monitors
- Detection of 5 agents and 3 gases
- Auto detection of primary and secondary agents
- Measurement and display of MAC value



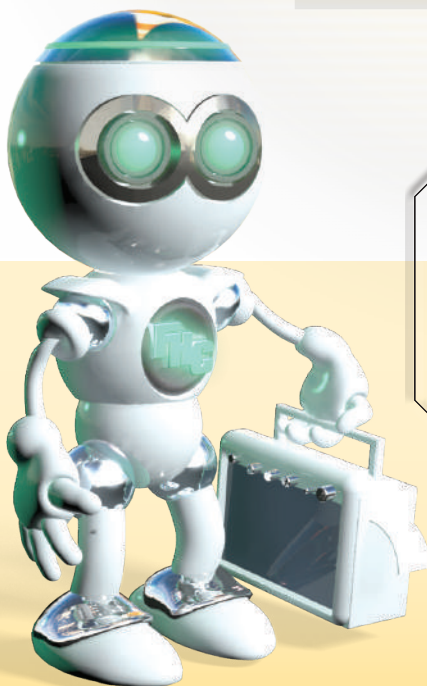
LAF386390056371

## SpotSkan Spot-Check Vital Sign Monitor:

- 6.5" color TFT display
- Capacitive touch keypad
- SpO2 with Plethbar
- Quick temperature measurement
- NiBP measurement
- Pulse rate from SpO2/NiBP
- Adult and pediatric applications
- 12 patients' history storage
- Thermal recorder printer
- Battery back-up



LAF3-85-390-0335-13



**Don't see a monitor you like?  
Call a sales rep and ask to see  
our full patient monitor line to  
ensure you get the right patient  
monitor you need for your  
facility!**