

Stainless Steel Cabinetry

At FHC, we offer complete customization to fit any special requests or requirements that the customer needs, at a competitive price. We use fully engineered CAD renderings to supply perfection and accuracy in every aspect. With fully-welded construction and top quality stainless steel, our cabinets are built for long-lasting durability and reliability. Whether it's Supply Storage, Nurse Documentation, or Overhead Storage, we have the equipment you can count on.

Supply Storage Cabinets:

Standard Features:

- Fully-welded construction
- Multiple layouts for individual requirements
- Full CAD renderings
- Engineered room layouts in CAD

Options:

- Glass or stainless steel hinged doors
- Glass or stainless steel sliding doors
- Freestanding, recess or on casters
- T-handle locks
- Pegboard back
- Drawers
- Variable height bases
- Slope tops
- Electronic keypad door locks
- Pull out catheter hooks with card holder
- Pass through construction

Standard Sizes:

- Depths: 18" and 24"
- Widths: 24", 30", 36", 48" and 60"
- Flat top heights: 60", 64", 72", 78" and 84"
- Slope top heights: 70", 78", 84" and 90"

Freestanding cabinet w/ hinge glass doors

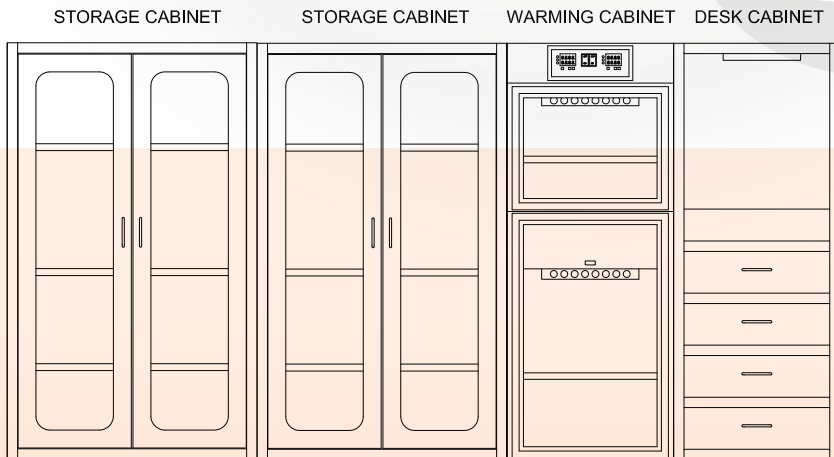
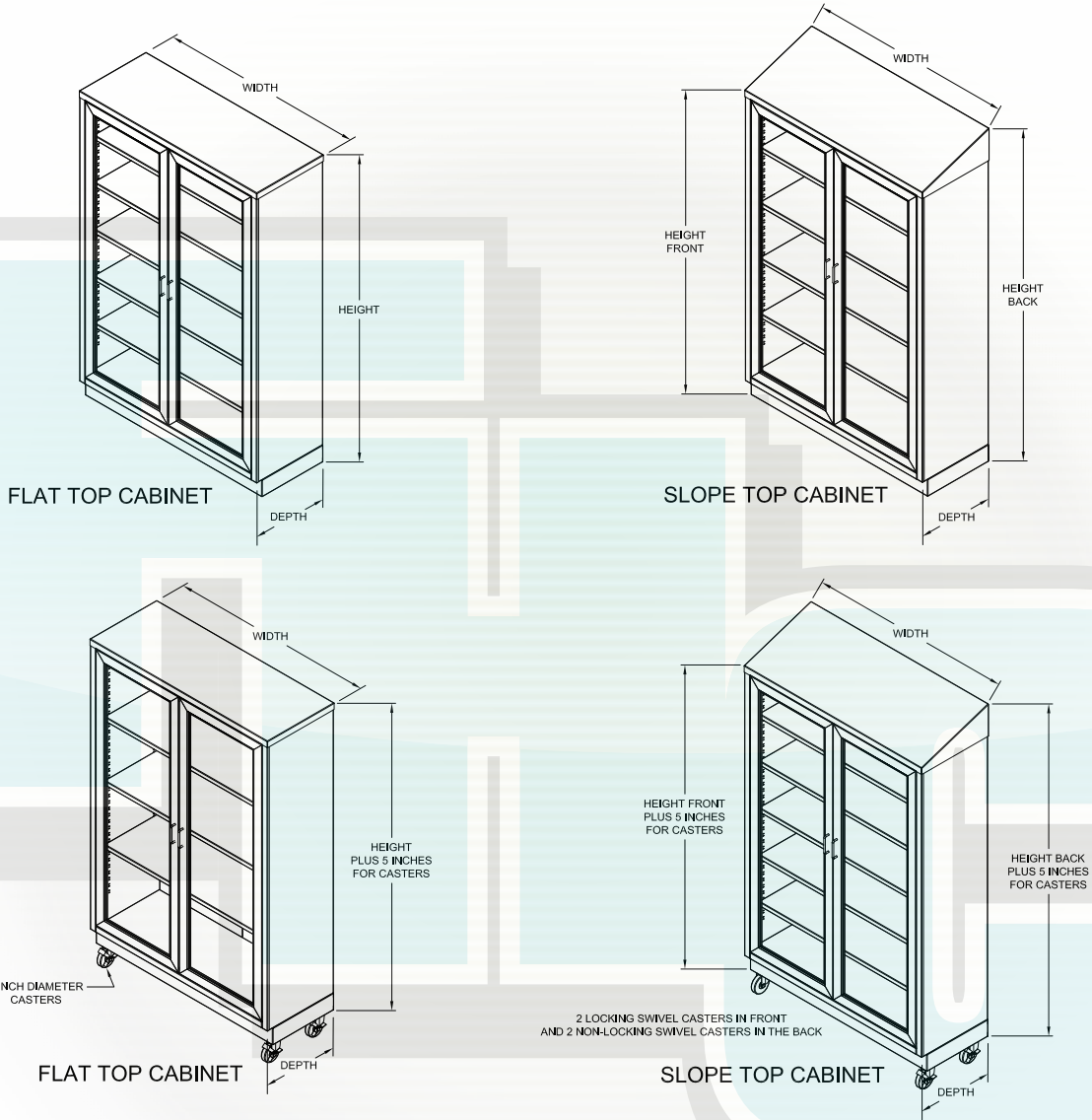
Freestanding cabinet w/ sliding glass doors

Recessed cabinet w/ sliding glass doors

Custom sizes available upon request

Stainless Steel Cabinetry

Sample Supply Storage Cabinet:



ANY COMBINATION OF STORAGE CABINETS, DESK CABINETS, AND WARMING CABINETS CAN CREATE A CONTINUOUS BANK OF CABINETS.

Stainless Steel Cabinetry

Nurse Documentation Stations:

Standard Features:

- Fully-welded construction
- Recess or free standing
- Multiple layouts for individual requirements
- Heavy duty pull out drawers
- Vented closures for electronics
- Integrated wire management system
- Open backs for easy install
- Pull out shelf for easy PC install
- Base units, wall units and overhead units available
- Full CAD renderings
- Engineered room layouts in CAD

Options:

- Glass or stainless steel doors
- Pull out writing surface
- Overhead lighting
- Magnetic back board
- Pegboard panels
- Recess or freestanding
- T-handle locks
- Variable height bases
- Electronics keypad door locks



Custom sizes available upon request

Overhead Storage Cabinets:

Standard Features:

- Fully-welded construction
- Multiple layouts for individual requirements
- Full CAD renderings
- Engineered room layouts in CAD

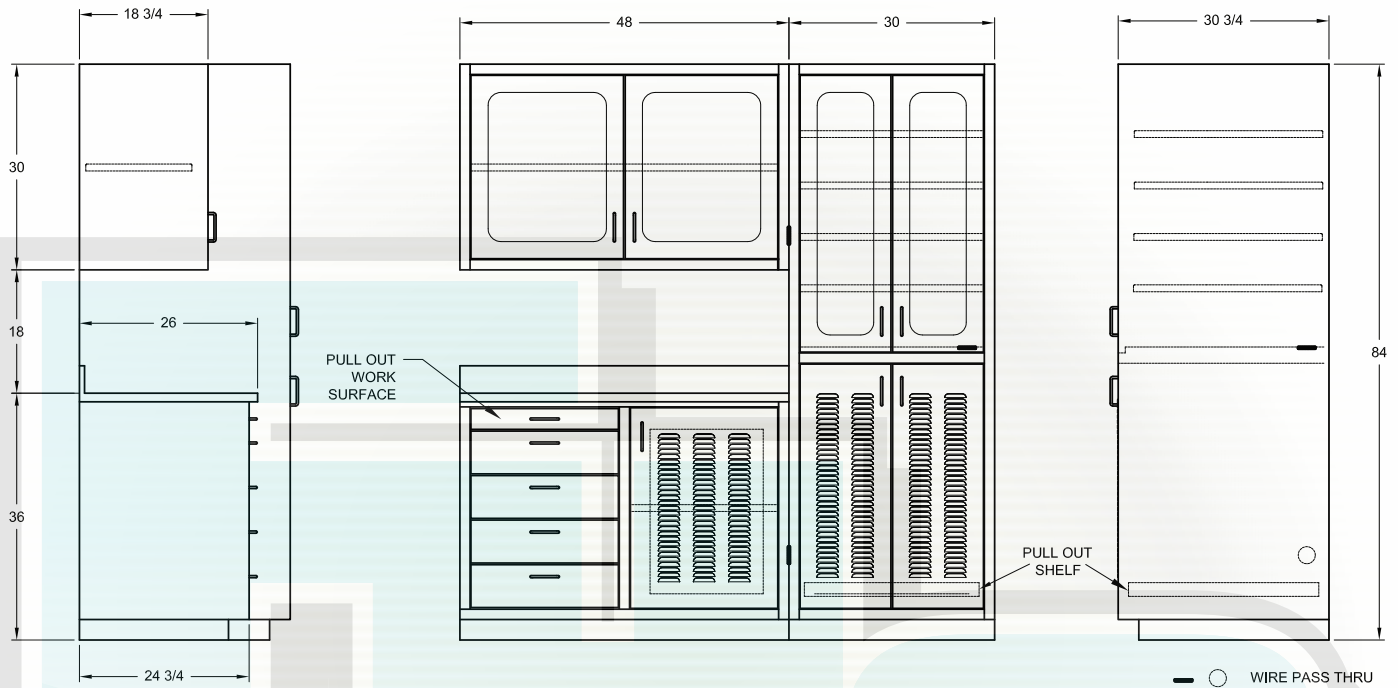
Options:

- Glass or stainless steel doors
- Sliding glass doors
- T-handle locks
- Pegboard back
- Drawers
- Slope tops
- Electronics keypad door locks
- Pass through construction



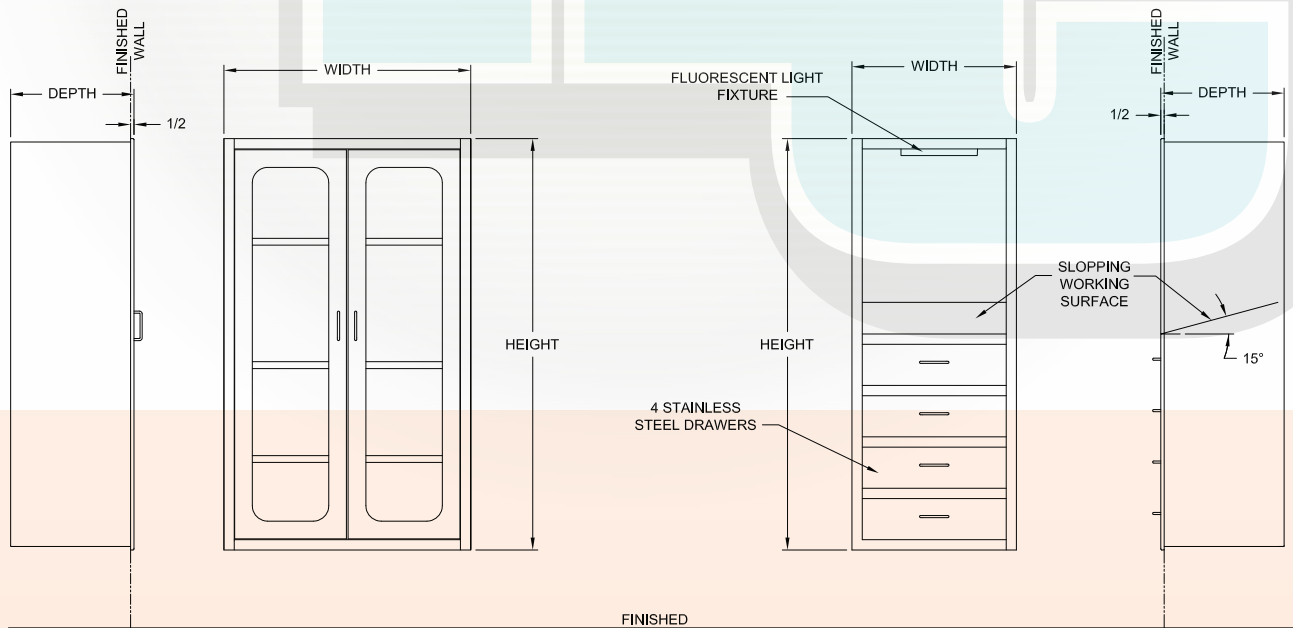
Stainless Steel Cabinetry

Sample Nurse Documentation Station:



DOCUMENTATION SHOWN WITH TOWER ON THE RIGHT SIDE.
DOCUMENTATION STATION CAN BE CONFIGURED WITH THE TOWER ON THE LEFT SIDE.

WE CAN CUSTOMIZE ANY COMPONENT OF THIS DOCUMENT STATION
TO FIT A SPECIFIC SPACE OR USER REQUIREMENT.



STANDARD SIZES
DEPTH 16", 18", 24"
WIDTHS 24", 30", 36", 48", 60"
HEIGHTS 60", 72"

ANY SIZE CAN BE MANUFACTURED PER REQUIRED SPECIFICATION

STANDARD SIZES
DEPTH 16", 18", 24"
WIDTHS 24", 30", 36"
HEIGHTS 60", 72"

ANY SIZE CAN BE MANUFACTURED PER REQUIRED SPECIFICATION